

# Seahorse Seabed Cone Penetrometer



*Seahorse Seabed Penetrometer*

The SEAHORSE Seabed Penetrometer system is a lightweight PCPT capable of undertaking a rapid evaluation of insitu soil properties in a large variety of soil types in water depths of up to 600 metres. Test results are used to assess strength parameters, pore water pressure and relative soil density, as well as to provide a detailed stratigraphic profile.

The SEAHORSE compact coiled rod system penetrates a 5cm 2 piezocone continuously into the seabed at the standard rate of 2.0 cm per second to a maximum penetration of 15m (depending on the soil conditions). The system is suitable for deployment from survey and smaller utility vessels of opportunity.

The SEAHORSE is deployed via a single lift/log cable and comes complete with it's own combined deployment winch, so reducing the deck space requirement, and vessel facilities demands for CPT operations.

#### Special Features

Dedicated lifting / logging winch capable of deploying system in water depths currently up to 600m.

#### Cones Available

- 5cm 2 Piezocones

#### Applications

- Offshore pipeline route and subsea structure geotechnical surveys
- Pre-dredging geotechnical investigations
- Marine inshore geotechnics
- Site investigations for marine reclamation projects



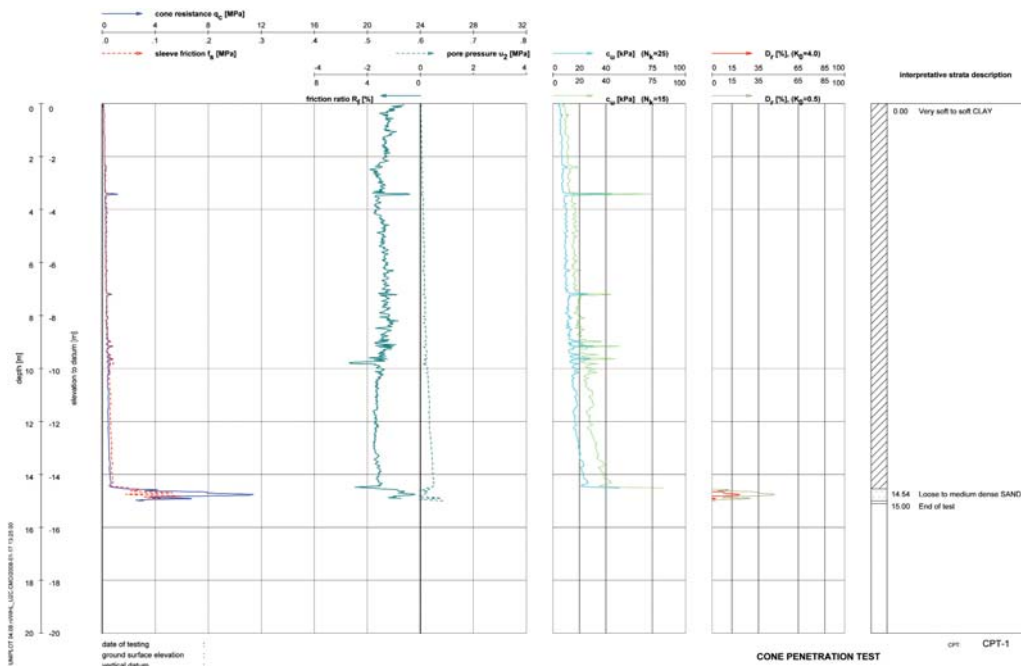
### Technical Data/Dimensions

FRAME(m)	WEIGHT(tonnes)	MAX THRUST(KN)
2 x 2 x 2	4.2	35

Deck space required : 10m x 8m

Deployment requirements : A-frame

Example PCPT Data set from SEAHORSE :



The specification of the equipment in this data sheet may be subject to modifications without prior notice

Fugro Alluvial Offshore Limited  
Morton Peto Road  
Gapton Hall Industrial Estate  
GreatYarmouth  
NR31 OLT UK  
Tel : +44 (0) 1493 650 484  
Fax : +44 (0) 1493 440 319  
www.alluvial.co.uk  
info@alluvial.co.uk